

# FACTSHEET:

## Social Justice

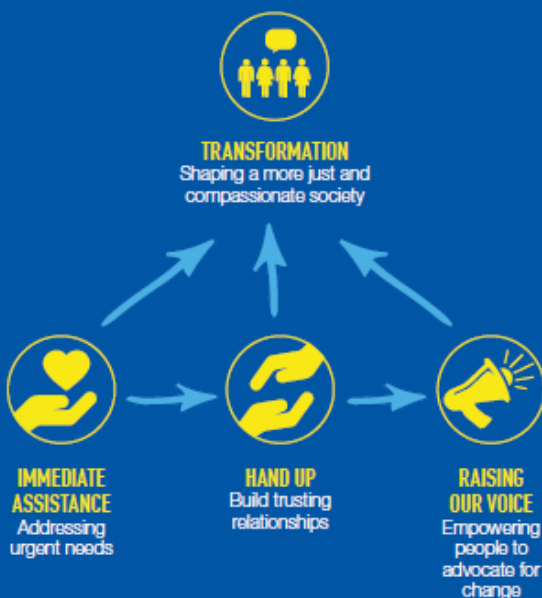
### BUST SOME MYTHS!

Ask the group to stand in the middle of the room. When you share the following statements, get them to stay standing if they think it's a fact or duck down if they think it's a myth. Then share the correct answer.

The Society is committed to alleviating immediate need, but also to challenging structures and government policy that contribute to inequality. The Society advocates for policy reforms leading to a more just, compassionate and equitable society, with the aim of eliminating the root causes of poverty.

We begin by providing immediate assistance and building trusting relationships with the people we assist. This trust helps us to uncover the causes of disadvantage in order to offer a hand up to people in need.

**The Society calls for solutions to injustice by engaging government, working with other organisations and raising awareness across the community.**



- Everyone in Australia has the same life expectancy. **FALSE!**  
(Aboriginal and Torres Strait Islander peoples have a life expectancy 10-17 years less than other Australians.)
- Indigenous people only make up 2.5% of Australia's population, but 26% of adult males in prison are Indigenous **TRUE!**
- The top 1% of Australia's wealthiest has nearly a quarter of the Australian total wealth. **TRUE!**  
(They have over 22% of the total Australian wealth.)

### CONVERSATION STARTERS

#### What does social justice mean to you?

Broadly, it means everyone has equal economic, social and cultural rights – like access to education, employment, safety, health and social fulfilment – regardless of their ethnicity, religion, class, disability, gender, sexuality, age or race

#### What social inequalities have you seen in your community?

Local issues might include poverty, racism, ageism, or when someone is treated unfairly or denied access to opportunities because they are seen as different.

#### Why do you think social inequality exists?

Generally, social inequality falls into two groups that have two different causes:

- Unequal treatment of people by other people due to a personal belief about someone's race, sex, age, faith, etc, or;
- Unequal regulations and laws made by government that intentionally or unintentionally discriminate against a group, and leave them without the same opportunities and resources afforded to others.